



***Introduction
to
Suzhou Industrial Park***



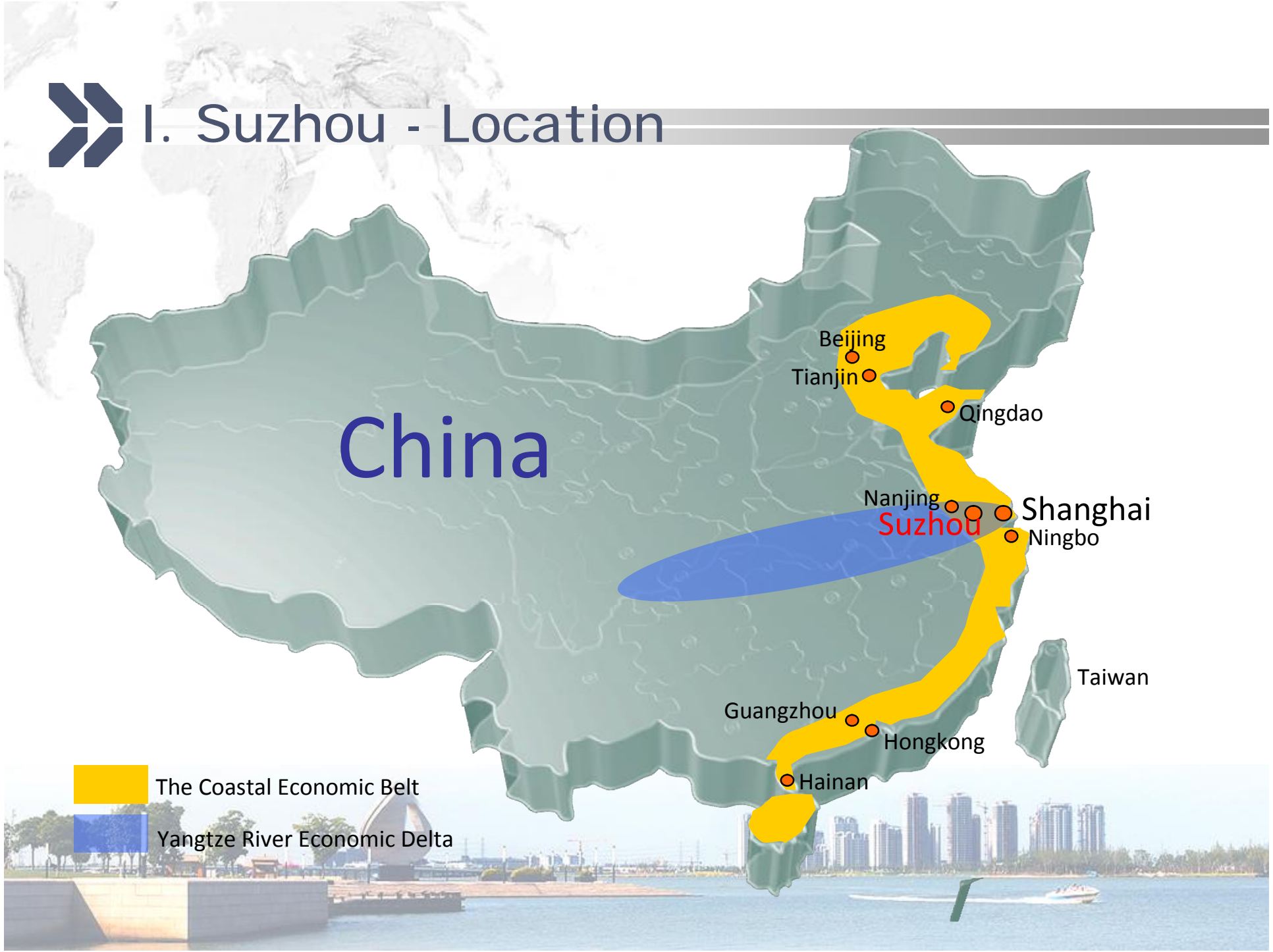
Content

- **I. Suzhou**
- **II. Suzhou Industrial Park**
- **III. Suzhou Dushu Lake Science and Education Innovation District**





I. Suzhou - Location



-  The Coastal Economic Belt
-  Yangtze River Economic Delta



I. Suzhou - Transportation

- North
北
- 国道 — state road
 - 高速公路 — express way
 - - - 铁路 - - - rail way
 - - - 苏州轻轨 - subway





I. Suzhou - Culture and History



Rich resources

34 cultural relics under state-level protection

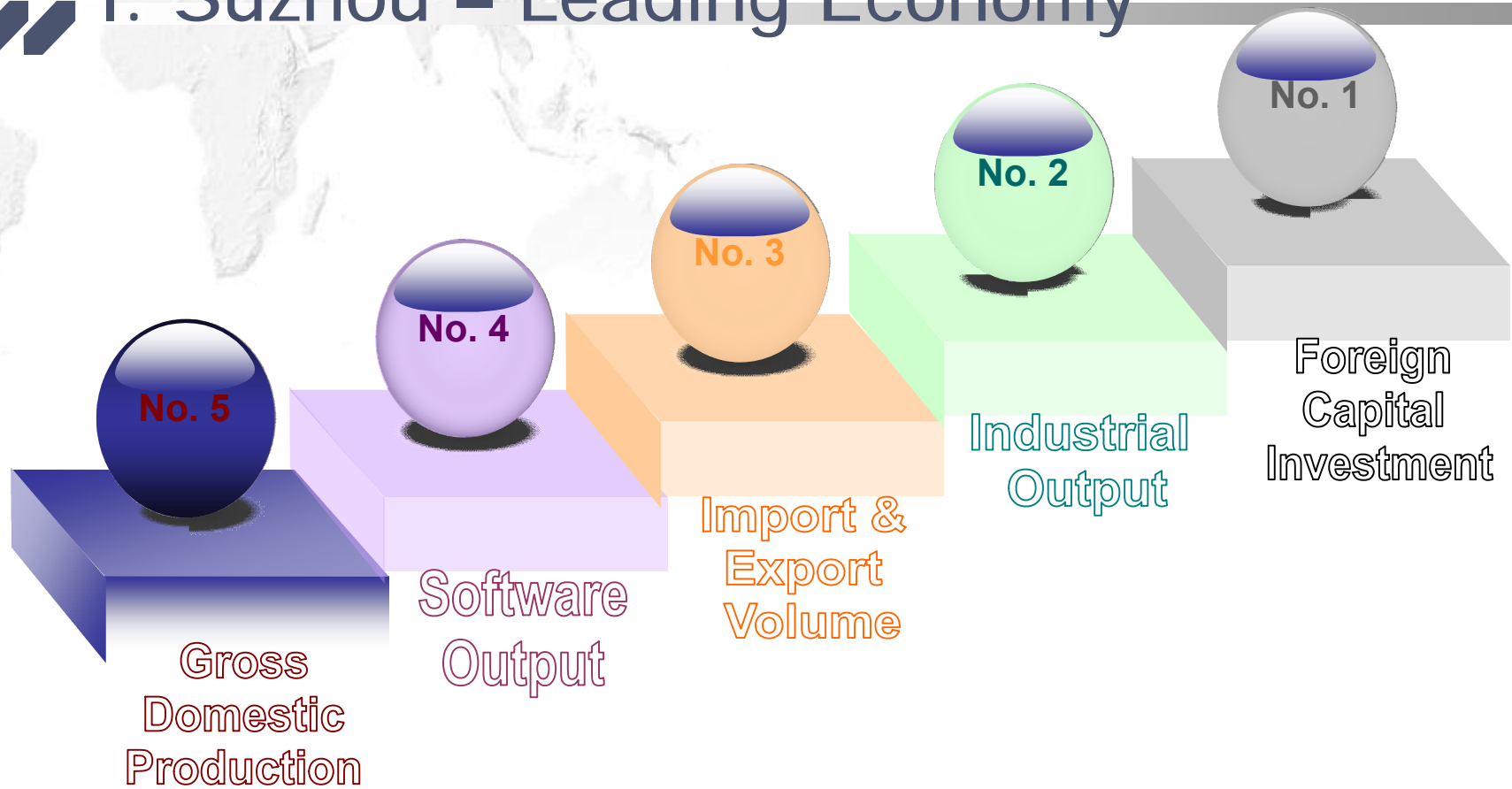
60 classic gardens

9 classic gardens listed as World Cultural Heritage





I. Suzhou - Leading Economy



The per capita GDP has risen to US\$ 10,000.





I. Suzhou – Best city for entrepreneurship



2012 Charming China
Top 10 most attractive Chinese cities
In the eyes of foreign talents
Suzhou ranks No.4

2012 China Best Entrepreneurial City
Suzhou ranks No.6





I. Suzhou - 2010 China Best Business City

Talents, City Scale, Logistics, Business Operation, Innovation, Consumption



Guangzhou

Shanghai

Shenzhen

Hangzhou

Suzhou

Beijing

- Suzhou has been one of the TOP 10 for 7 years continuously

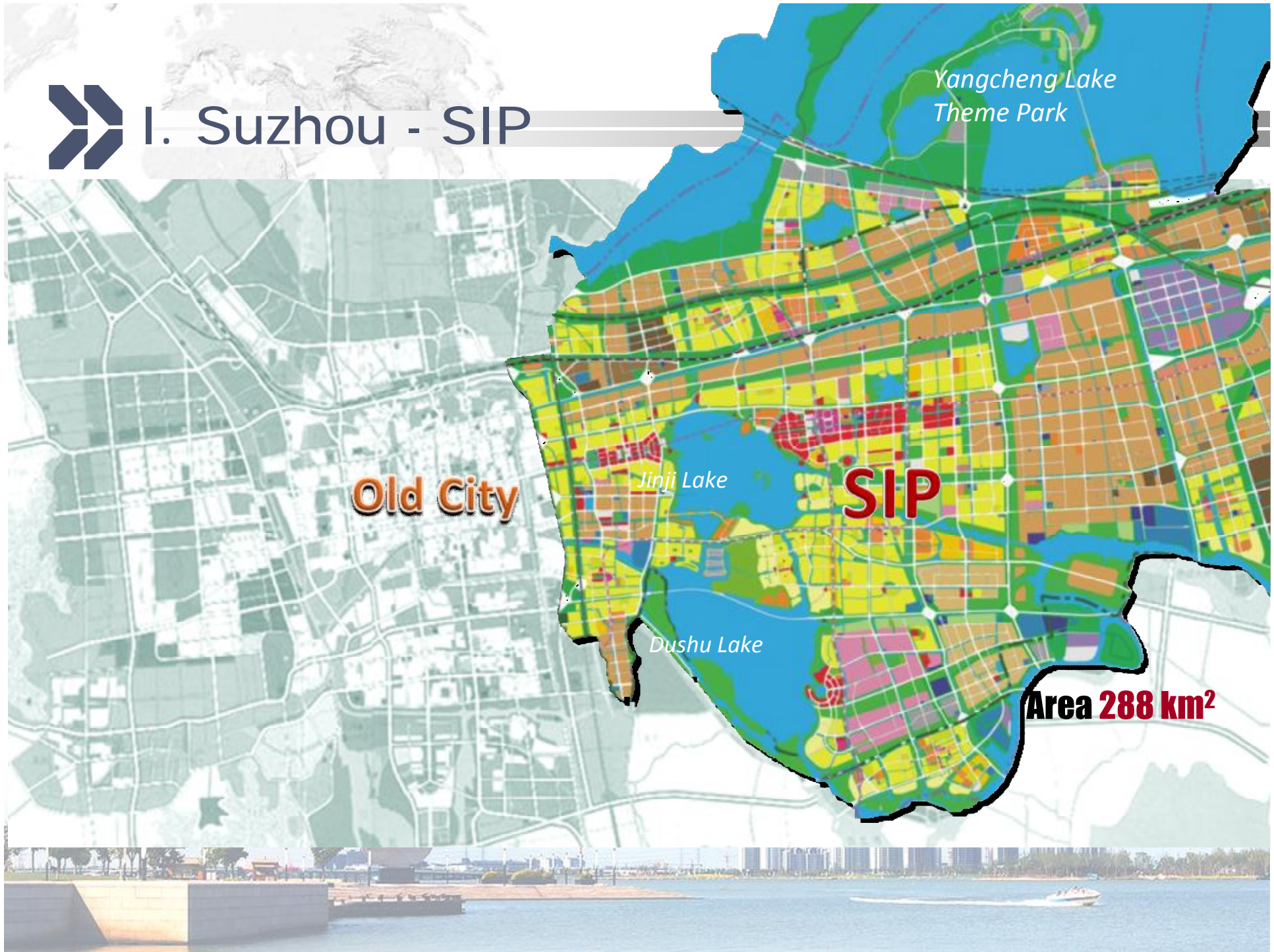
- The only prefectural-level city

China Sea Port
Suzhou Industrial Park





I. Suzhou - SIP



II. Suzhou Industrial Park

The largest cooperation project between
the China and Singapore governments

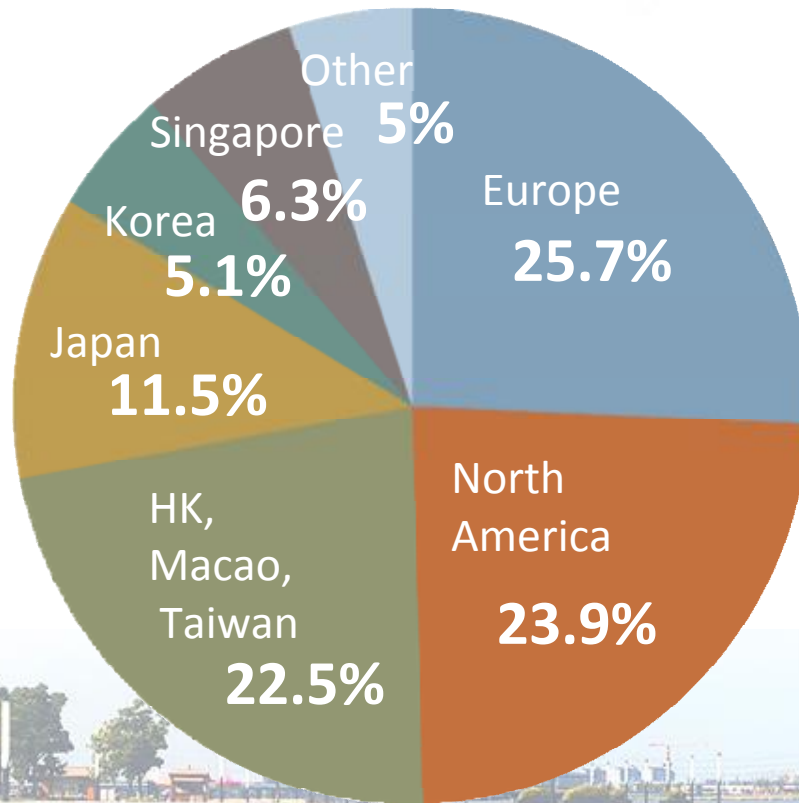




II.SIP - Industrial Development

Foreign Direct Investment -by Sep. 2012

Investment Projects Distribution



Foreign Enterprises

4,760

Accumulated
Utilized Foreign Capital

USD22.6 billion



II.SIP - Industrial Development

Industrial Structure



Machinery Manufacturing

3



Electronics, Information

+

3



Modern Service Industry



Nano-tech,
Application



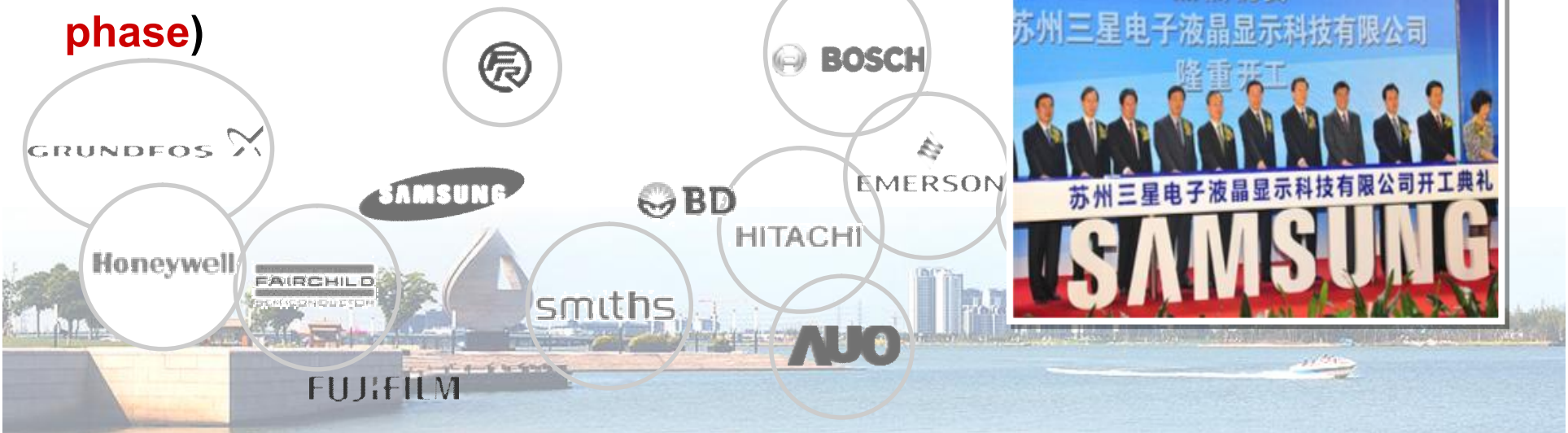
Bio-Medical



Cloud Computing

II.SIP - Industrial Layout

- Foreign Enterprises: **4000**
- Domestic Enterprises: **10000**
- Projects from Fortune 500 companies : **145**
- Euro and American companies: **2000**
- Projects of USD100+ million investment : **134**
- Projects of USD1+ billion investment: **7**
- SAMSUNG LCD project (**USD 3 billion for 1st phase**)



II.SIP - Industrial Development

L'OREAL
PROFESSIONNEL

smiths

smith&nephew

SIEMENS



BOC

3M

DELPHI

Wyeth



B&Q
百安居



GlaxoSmithKline



BOSCH

EMERSON
Network Power

PHILIPS

FLOWSERVE

Baxter



HERBALIFE.

RENESAS

NOKIA

Lilly



Saurer



BLACK & DECKER

CATERPILLAR

86 Fortune 500
companies in SIP



II. SIP - R&D Development



Technology platforms support

- In 2011, SIP allocated science and technology capital RMB 599.5 million.
- Budget for 2012 RMB 630 million, year on year increase 5.1%.
- In 2011, SIP gained science and technology fund RMB 274 million from upper gov.

Financial Support

- National One-thousand-talents Scheme
- Jiangsu Province Shuang Chuang Talents Scheme
- Suzhou Gu Su Talents Scheme
- SIP Leading Talents Scheme
- SIP Jinji Lake Double Hundred Talents Program

Talent Support



➤ II. SIP - IP Protection

- SIP is the 1st “China IP protection pilot park” in Jiangsu Province with measures covering:
- Special IP fund---with RMB 15M in 2010, to encourage IP right application;
- SIP IP protection center--- offer one-stop service;
- IP Right Litigation Court --- handle IP right relevant disputes.





Living Environment



Living Environment





III. Suzhou Dushu Lake Science and Education Innovation District

Yangcheng Lake
Theme Park

30mins
To Shanghai

Nanjing-Shanghai
Inter-city Railway
SIP Station

MRT No.1

Jinji Lake

To Downtown
Suzhou 15mins

MRT No.3

Dushu Lake

MRT No.2

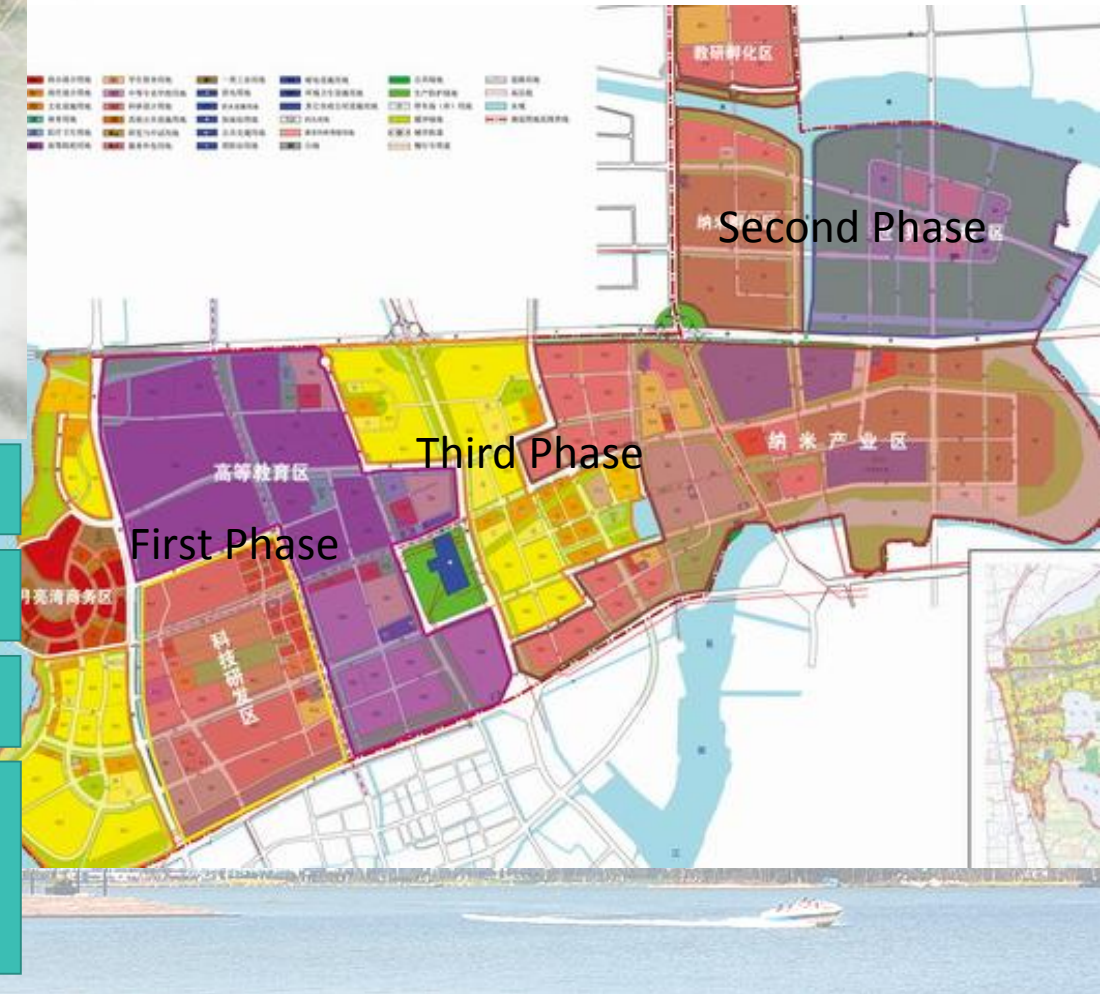
SEID

- Industrial
- Residential
- Commercial
- Greenery





III.SEID - Master Plan



25 km² Planned Area

25 Universities

182 Science & Technology Platforms

72,000 Students

20,000 Postgraduates and PhDs

III. SEID - Phase 1 (11 km²)



Higher Education

R&D Area

Living Area



III. SEID - Phase 2 (9 km²)



World Famous University Town

Innovative Industrial Park

Teaching & Researching Incubator

Flagship Companies Cluster

III. SEID - 25 Universities



THE UNIVERSITY of LIVERPOOL



東京工業大学
Tokyo Institute of Technology



都柏林大学
University College Dublin



MONASH University



III. SEID - Milestone

SEID was granted by Ministry of Education the title of the Pilot Area for Higher Education Internationalization in December 2012.

高等教育国际化示范区

中华人民共和国教育部
二零一二年十二月





III. SEID - Public Sharing Facilities

Library



Sports Center



Theater and Cinema



HR Market



Church





III. SEID - Conference Center and Hotels





III. SEID - Student Dormitory and Transportation





III. SEID - Moonbay Business Center





III.SEID - Wisdom Center offices





Working Together to Achieve A Win-Win Future

